

VANDA RECESS FLUSHBOX

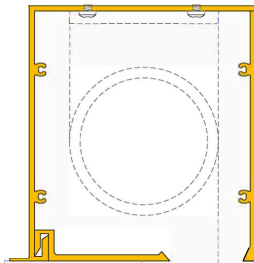
Extrusion & Components *March 2025*



FULL FLUSHBOX

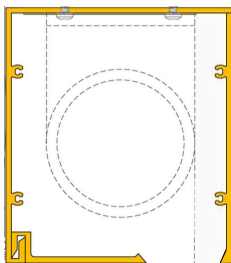


PART BOX



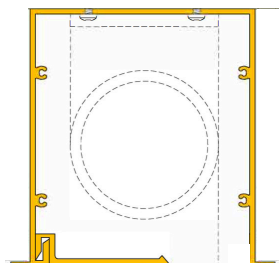
FULL FLUSH BOX EXTRUSION with COVER PLATE

Part No: #VA-FB-100
Comes in 4.2m Lengths



FULL FLANGELESS FLUSH BOX EXTRUSION with COVER PLATE

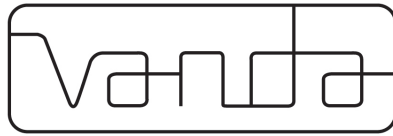
Part No: #VA-FB-130
Comes in 4.2m Lengths



FULL FLUSH BOX (FLANGE ON BOTH SIDES) with COVER PLATE

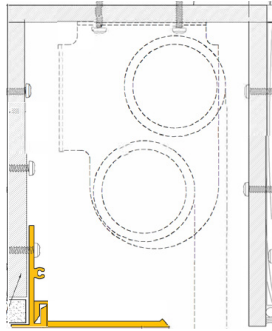
Part No: #VA-FB-140





VANDA RECESS FLUSHBOX

Extrusion & Components *March 2025*



PART FLUSH BOX EXTRUSION with standard COVER PLATE

Part No: #VA-PB-101 (comes in 4.2m lengths)

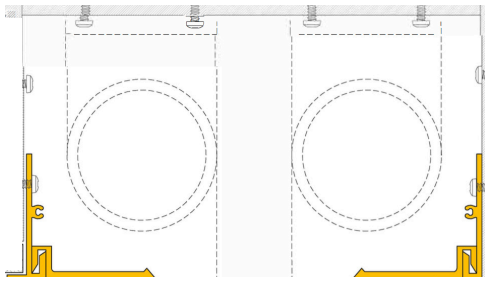
PART FLUSH BOX EXTRUSION with extended COVER PLATE

Part No: #VA-PB-201 (comes in 4.2m Lengths)

Partbox Bracket Extrusion - #VA-PB-100

Cover plate only - #VA-FB-055

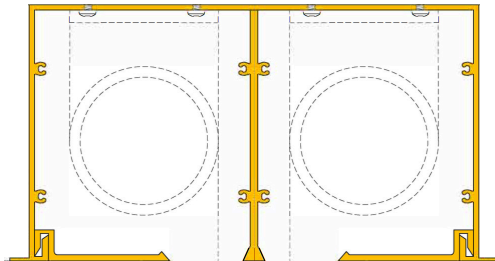
Extended Cover plate only - #VA-FB-075



VANDA DOUBLE BLIND RECESS with PART BOX

Part No: #VA-PB-101 / 2

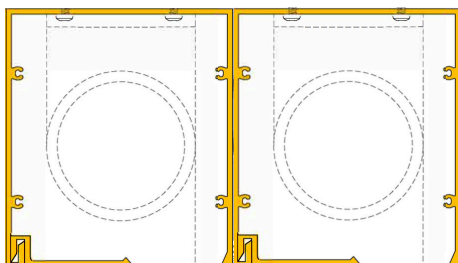
Comes in 4.2m Lengths



VANDA DOUBLE BLIND RECESS with Flange

Part No: #VA-FB-600

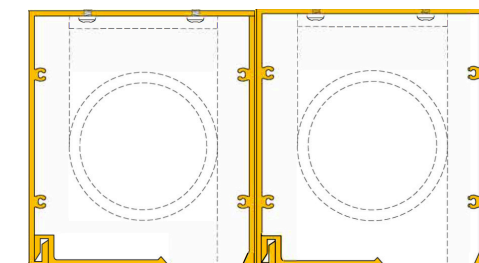
Comes in 4.2m Lengths



VANDA DOUBLE FLUSHBOX MOUNTED SIDE BY SIDE FLANGELESS

Part No: #VA-FB-500

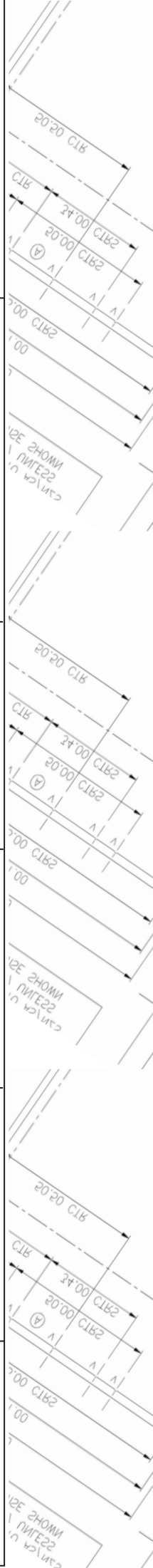
Comes in 4.2m Lengths

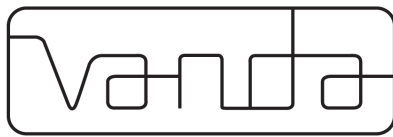


VANDA DOUBLE FLUSHBOX MOUNTED SIDE BY SIDE

Part No: #VA-FB-400

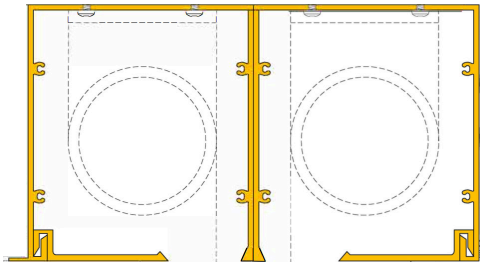
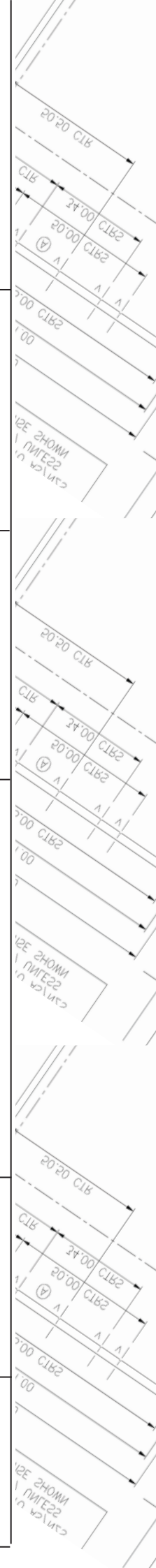
Comes in 4.2m Lengths





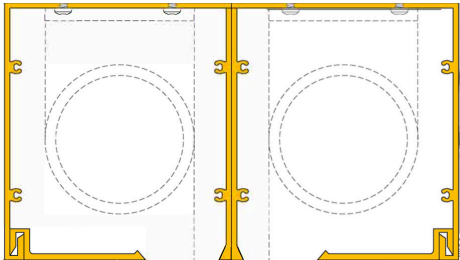
VANDA RECESS FLUSHBOX

Extrusion & Components *March 2025*



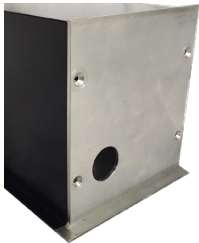
VANDA DOUBLE FLUSHBOX MOUNTED SIDE BY SIDE

Part No: #VA-FB-300
Comes in 4.2m Lengths



VANDA DOUBLE FLUSHBOX MOUNTED SIDE BY SIDE FLANGELESS

Part No: #VA-FB-200
Comes in 4.2m Lengths



Single Endcap



Double Endcap

FLUSHBOX END CAPS

Part No: #VA-FB-110 (Supplied as a pair)

FLUSHBOX END CAPS with (FLANGE REMOVED)

Part No: #VA-FB-131 (Supplied as a pair)

FLUSHBOX DOUBLE END CAPS

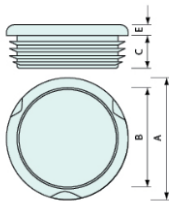
Part No: #VA-FB-220 (Supplied as a pair)

FLUSHBOX DOUBLE END CAPS

(with Flange removed)

Part No: #VA-FB-221 (Supplied as a pair)

A = 42mm
B = 37mm
C = 11.5mm
E = 5mm



PLASTIC CABLE INSULATOR PLUG

Part No: #VA-FB-120
Purchased individually
Available in White or Black



BUTTING PIN

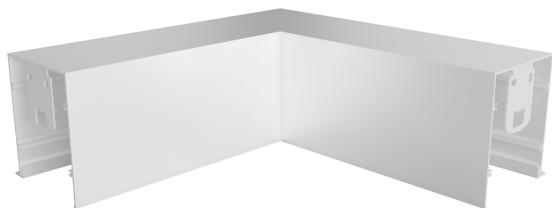
Part No: #VA-FB-150
(to enable precise line up of two butting Flush Box Extrusions) Supplied as a pair



VANDA RECESS FLUSHBOX

Extrusion & Components *March 2025*

90 DEGREE INTERNAL MITRE CORNERS



Part No: #VA-FB-501B
INTERNAL MITRE CORNER FOR FLUSHBOX VA-FB-100

Part No: #VA-FB-503B
INTERNAL MITRE CORNER FOR FLUSHBOX VA-FB-130

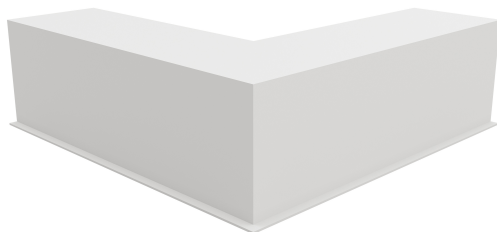
Part No: #VA-FB-504F
INTERNAL MITRE CORNER FOR FLUSHBOX VA-FB-130

Part No: #VA-FB-505B
INTERNAL MITRE CORNER FOR FLUSHBOX VA-FB-140

Part No: #VA-FB-506F
INTERNAL MITRE CORNER FOR FLUSHBOX VA-FB-140

PLEASE REFER TO 90 DEGREE MITRE FLUSHBOX CONFIGURATION DOCUMENT FOR FURTHER CLARIFICATION

90 DEGREE EXTERNAL MITRE CORNERS



Part No: #VA-FB-502B
EXTERNAL MITRE CORNER FOR FLUSHBOX VA-FB-100

Part No: #VA-FB-503F
EXTERNAL MITRE CORNER FOR FLUSHBOX VA-FB-130

Part No: #VA-FB-504B
EXTERNAL MITRE CORNER FOR FLUSHBOX VA-FB-130

Part No: #VA-FB-505F
EXTERNAL MITRE CORNER FOR FLUSHBOX VA-FB-140

Part No: #VA-FB-506B
EXTERNAL MITRE CORNER FOR FLUSHBOX VA-FB-140

PLEASE REFER TO 90 DEGREE MITRE FLUSHBOX CONFIGURATION DOCUMENT FOR FURTHER CLARIFICATION

NOTES: